



# Wimbledon Park Residents' Association

## ‘Save Wimbledon Park’

Metropolitan Open Land (Green Belt)  
Capability Brown Grade II\* Listed Park  
Protected by National and Local Planning Rules  
& Covenants



**Spring 2023**

*Sign the petition*

[www.change.org/SaveWimbledonPark](http://www.change.org/SaveWimbledonPark)

**9,154** signatures already *Plus well over 2,000 objections*

*New website*

[www.SaveWimbledonPark.org](http://www.SaveWimbledonPark.org)

[wimbledonpark.com](http://wimbledonpark.com)

# sps timber windows



■ box sash windows ■ casement windows ■ doors ■ plantation shutters



- Award-winning sps timber windows is celebrating its 25th year as South West London's most established specialist in the design, manufacture, installation and finishing of premium quality, energy-efficient, bespoke timber windows and doors, including
- Box sash windows, casement windows, front doors, French doors, folding sliding doors.
- Custom made to "A" rated specifications in Accoya® wood.
- Accurate representation of period designs and features.
- Double-glazed and draught proofed.
- Contact us for a quotation.
- **Wimbledon Park Residents' Association Christmas 2022 Offer:**  
Receive up to £150 John Lewis Vouchers (T&C's apply).  
Quote offer code WPR.A.

**Showroom** 61 Revelstoke Road, Wimbledon Park, SW18 5NL

[www.spstimberwindows.co.uk](http://www.spstimberwindows.co.uk)

[info@spstimberwindows.co.uk](mailto:info@spstimberwindows.co.uk)

020 8879 3443



# Easter edition 2023

## Contents

<b>Chairman's Report</b>	<b>4,5,&amp; 6</b>
<b>Short summary of Day v Shropshire</b>	<b>7</b>
<b>Update from Stephen Hammond MP</b>	<b>8 &amp; 10</b>
<b>Durnsford Recreation Ground</b>	<b>12 &amp; 14</b>
<b>Join the WPRA</b>	<b>15</b>
<b>Councillors' Report</b>	<b>16 &amp; 17</b>
<b>Friends of Wimbledon Park</b>	<b>18 &amp; 19</b>
<b>Get involved with WPRA</b>	<b>20</b>
<b>More 1993 coverage</b>	<b>23</b>
<b>WPRA Communications</b>	<b>24</b>
<b>Wimbledon Park Community Trust</b>	<b>26 &amp; 27</b>
<b>Advertisers' Index</b>	<b>30</b>

**Cover page image (extracted from the presentation information on the AELTC website) shows the layout of the proposed new courts and landscaping on the golf course. The red dotted line represents the new proposed parkland area.**

**All advertising enquiries to: Pamela Healy  
Email: [pam.2015@outlook.com](mailto:pam.2015@outlook.com)**

**Editorial help needed. Contact Iain Simpson on 020 8947 1301  
email: [iainsimpson@imi-consulting.com](mailto:iainsimpson@imi-consulting.com)**

# Chairman's Report

1993 - 2023

It is significant that exactly 30 years have elapsed since the Wimbledon Park Golf Club freehold land was sold to the AELTC.

As you know, from my previous reports, a significant campaign was launched in 1993 to stop the land being sold by the Council. Regrettably it was unsuccessful but it did make a major impact and the result was a significant strengthening of the protections on the land.

When Merton decided to sell in 1993, they committed to maintain it as open space. Both Merton and the All England assured the public that there would be no development, covenanting that the land would not be used except for leisure, recreation and open space, nor built upon except as ancillary to recreation or open space use. The Covenants were given to Merton as the owner of the Lake and Park, which they hold under a trust for the public. Merton must enforce the Covenants to protect the interests of the public and to honour their 1993 commitment. The All England now propose a covered 8,000 seat stadium, 10 other buildings, 38 purpose built tennis courts and 9kms of roads and paths, designed for their private championship and tournament commercial use. This use and the buildings would all breach the Covenants, but the Covenants do not prevent some reasonable leisure, recreational or open space use of the land, and the All England must come up with a suitable alternative.

The terms of the Covenants are:

1. Not to use the [Golf Course] other than for leisure or recreational purposes or as an open space.
2. No building shall be erected on the [Golf Course] other than a building or buildings the use of which is ancillary to the recreational or open space use referred to in para 1 and which building, or buildings shall not impair the appreciation of the general public of the extent or openness of the property.
3. As soon as golf ceases, to dedicate a public walkway around the Lake.

The case of Thames Water v Oxford City Council concerned a restrictive covenant which a Council wanted to circumvent. A football stadium and ancillary works were to be built on land burdened by a covenant "*not to use the land other than for recreational purposes*". It was stated at p170:

*"The second defendant is proposing to occupy and use the stadium in order to accommodate, inter alia, professional football matches at which spectators will arguably 'recreate themselves' by watching. It may be said that such use is therefore in part for the recreational purpose of the spectators. But the covenant is not to use the land otherwise than for a recreational or ancillary purpose. The commercial exploitation of the game of football by hiring players and charging spectators is not itself a recreational purpose. Nor is it merely ancillary to the recreational purpose of the spectators."*



**Substitute tennis for football and it seems clear that the proposal breaches the Covenant, because the commercial playing of tennis as proposed is the primary purpose and itself neither a leisure nor a recreational use.**

**Recently, I was reviewing the WPRA archives from 1993 which have proved to be so useful. You might be interested in the comments on the examples I have included on pages 6 and 23 which, I think you will agree, are very prescient when you consider the challenge we face now.**

**Where are we now?**

**The latest indication for a planning date is April. However, this is by no means certain. The date has been put back several times over the last 18 months. This is largely due to the sheer volume and complexity of documents the Council is having to deal with. We believe this is the largest planning application the Council has ever had to deal with. Throughout, there has been no suggestion from the AELTC that the main proposals would change.**

**We have met twice with representatives of the Council to discuss the Covenants. However, we are no clearer what the Council is going to do about the Covenants.**

**Indeed, in February this year, at the Council meeting, the Council was pressed by the LibDems (the major opposition party), Conservatives and Merton Independents to change their stance and change their statement from the previous February from 'respect' the Covenants to 'enforce'. Unfortunately, this attempt failed by a margin of 25 to 28 votes.**

**It would appear that the Council faces a major dilemma, being conflicted on the one hand as the Planning authority and on the other as the beneficiaries of the Covenants which they hold in trust for the residents.**

**Since the lodging of the AELTC planning application in July 2021, they have consistently refused to indicate that they are intending to enforce the Covenants despite the clear intentions of their predecessors in 1993 that the land sold to the AELTC should be kept open and not be built on. This is clearly set out in the minutes of various committee meetings at that time, and the public statements of the leader of the Council at that time, Tony Colman, and the then Chairman of the AELTC, John Currie.**

**In the face of a planning application by the AELTC for a project that blatantly seeks to ignore and override the obligations in the Covenants agreed to, the Council also continues to hang back from making a clear statement that it will enforce the legal obligation it imposed in 1993 on behalf of the residents of Wimbledon. What, you may ask, is holding them back? Has a deal been done behind closed doors? Has the wealth and reputation of the AELTC been too great to resist?**

**The Council maintains that the Covenants are a legal issue separate to the consideration of the AELTC Planning Application 21/P2900. We have written on two occasions that not only is that idea entirely illogical and does not make common sense, it is clear from various recent legal decisions that the courts are of the opinion that issues which affect the planning property and**

its use and development are Material Considerations. This means that the planning decision maker must take them fully into account. Here the 1993 covenants and the circumstances in which they were imposed are clearly such issues, and in this case they must be given considerable weight in the decision.

We continue to press the arguments and lodge objections – most recently, one has been lodged by one of our campaign members, Parkside Residents' Association (author Sue Cooke), which critically analyses the so called 'benefits' which the AELTC claim they are offering through their proposals. Also recently, through WPRA, Christopher Coombe has written a paper on Material Considerations – essentially arguing that the Planning officers and Committee should take into account the existence of the Covenants and status of the land when determining the Planning decision – which it appears under planning rules they claim they do not have to do. This whole issue has recently been highlighted in Day v Shropshire where the Supreme Court has handed down a unanimous decision in favour of Peter Day the appellant, a hero of our day, who has manfully pursued his argument through the Court of Appeal and then to the Supreme Court. Christopher Coombe has kindly done a short summary for us on page 7. We believe this is a very important decision.

Wishing you all a very happy Easter. Iain

Wimbledon Informer 24.9.93

# YEARS MOUNT AFTER GOLF COURSE SALE

**THE All England Lawn Tennis Club this week snapped up Wimbledon Park Golf Course for £5.2m.**

Merton council sold the course on condition no development would take place.

Merton council sold the course on condition no development would take place.

"The golf course land will be retained as open space," said council leader Tony Colman. "The whole stretch has been designated Metropolitan Open Land. We have declared it a conservation area and placed strong covenants on the sale."

**Hospital waiting lists soar**

WAITING list figures for St George's Hospital have soared by more than a quarter in less than a year.

The figures produced by the pressure group London Health Emergency show the number of patients waiting for treatment at the Tooting hospital has risen from 3,721 in August last year to 4,780 in July – an increase of 1,059 in eleven months.

The waiting list at Queen Mary's, Roehampton, has risen 925 to 4,575 and Kingston Hospital has seen its waiting list grow by 874 to 4,238 in the same period.

The overall increase for the five main hospitals in the south-west Thames region

## Tory anger at 'course sell-off'

**TORY Councillors are furious about Labour plans to sell off the golf course in Wimbledon Park, announced last week.**

"I only heard about these plans half an hour before the meeting" explained local member Coun. Theresa May.

"This is appalling behaviour from Labour. They have obviously been plotting behind closed doors to do this.

I asked them last year if they had any plans to sell off this land and they categorically said no."

Tory members in Wimbledon Village were also outraged by Labour's plans.

"I cannot condemn this Labour sell-out strongly enough" said Coun. Dirk Hazell.

"Labour have proved beyond a shadow of a doubt that they couldn't care less about either consultation or the environment."

Coun John Elvidge, Tory Group Leader added his opposition, saying "This is outrageous the plans were revealed at the eleventh hour and Labour wouldn't even delay the decision in order to consult with local people."

"They'll be losing over 100,000 a year in income for the borough's parks. They should be ashamed of themselves."

**Wimbledon Borough News 7.4.93**

**Theresa May was Councillor for Durnsford Ward in 1993**

**RAVEL**

**WORLDWIDE AIRFARE**

TO

EUROPE \* SWITZERLAND

AND \* ITALY \* SPAIN

AND THE VERY BEST PRICES

**Day v Shropshire (<https://www.supremecourt.uk/cases/uksc-2021-0031.html>)**

**This important unanimous recent decision of the Supreme Court bears a close resemblance to the circumstances of Wimbledon Park and the process by which LBM sold part of it to AELTG in 1993.**

**A local authority held land in Shrewsbury as open space under a statutory trust. They had failed to research or investigate their ownership and the trust, and failed to comply with the relevant legal provisions when they sold it. The Supreme Court held that, due to these failures, the land was not released from the statutory trust. The purchaser therefore took over the open space on trust for the public.**

**The planning permission which the purchaser obtained was quashed because those failures, and the trust, were material considerations which had not been taken into account in the planning decision.**

**A few quotes from the decision illustrate why the Court considered this issue to be so important:**

**Paragraph 1: For many years Parliament has recognised the importance for local communities of having green spaces where people can take exercise, play sport and meet each other in the outdoors. Certainly, the events of recent years blighted by the Covid-19 pandemic with compulsory lock downs and social distancing have confirmed that recreation areas have a vital role to play in the physical and mental well-being of people living in an urban environment.**

**The National Planning Policy Framework published by the Ministry of Housing, Communities & Local Government in July 2021 states at para 98:**

**“Access to a network of high quality open spaces and opportunities for sport and physical activity is important for the health and well-being of communities and can deliver wider benefits for nature and support efforts to address climate change ....”**

**Paragraph 118: If, as a result of this appeal, other local authorities decide to follow that advice and take stock of how they acquired and now hold the pleasure grounds, public walks and open spaces that they make available to the public to enjoy then that, in my judgment, would be all to the good.**

**The judgment refers to an important report on the whole saga by Michael Redfern KC, available on-line at <https://www.shrewsburytowncouncil.gov.uk/wp-content/uploads/Greenfields-Recreation-Ground-Inquiry-May-2022.pdf>.**

## **Update from your MP Stephen Hammond**

### **AELTC**

**It would seem that the long running and controversial application by the AELTC will soon move to the next stage and be considered by the Planning Committee. I have set out my objections to the application in several editions of the WPRA Newsletter. There are four principal areas of concern: the stadium and building on Metropolitan Open Land, the number of courts, the new park and its accessibility, and the closure of Church Road.**

**The AELTC application will be heard by the Planning Committees of both Wandsworth and Merton as it spans the borough borders. However, as the majority of the land lies within Merton, that will be the key determinant of the application.**

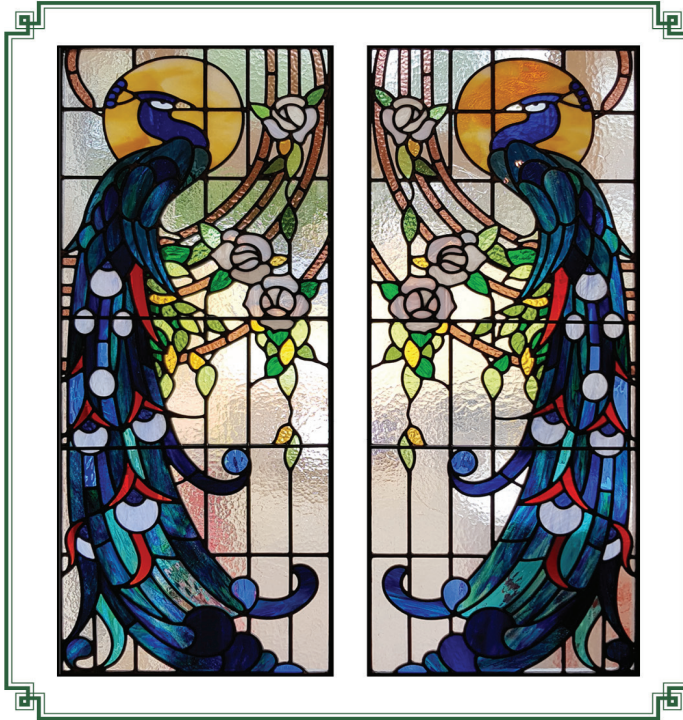
**Whilst the Planning Committee will decide whether or not the application is passed or rejected there are a number of outcomes possible thereafter. If the application is passed, what is known as the “call in” procedure for major projects will be activated. This procedure allows for a major application to be reviewed to ensure it complies with regional and national policies and objectives. In London, such an application can be “called in” initially by the Mayor of London / GLA and can also be called in by the Secretary of State with responsibility for planning. In this instance the application could be called in by both. I have met with the GLA and written to the Secretary of State to request this happens.**

**Many of you will also be aware that the land was subject to a covenant when it was sold by the London Borough of Merton in 1993/94. This covenant applies irrespective of any planning decision. Therefore, if the application was passed by the Planning Committee, both the Council and the AELTC would need to show the covenant was being enforced. The covenant, in simple terms, states that any benefit from the land is for the residents of Merton and that any building on the land is for recreational purposes only.**

**If the application were to be rejected by one committee and approved by the other, it is my understanding that the decision by Merton would be considered as carrying the most authority, as the major part of the land is within Merton.**



VICTORIAN, EDWARDIAN AND CUSTOM STAINED-GLASS



# CORIANDER

TRADITIONAL STAINED GLASS AND LEADED LIGHTS



YOUR LOCAL STUDIO:

**27-29 Kingston Road  
Wimbledon  
SW19 1JX**

020 8947 7635 • [info@corianderstainedglass.co.uk](mailto:info@corianderstainedglass.co.uk)

Finally, the outcome many of us hope for is that this application is rejected by the Planning Committees. The AELTC will then have two courses of action available to them. The first is to appeal to the Planning Inspectorate in Bristol which could overturn the local decision. However, I would hope that a rejection of this application would create the chance for a new start between the AELTC and local residents. Overwhelmingly, we are proud to have the world's greatest tennis tournament in our community and want it to remain so. I am convinced that, with negotiation and compromise, a solution which is acceptable to both the local residents and the Club can be found. Previously, I have brought the two sides together and I will do so again for the benefit of our local community.

## CRIME

I know that Wimbledon Park has seen an increase in car crime, theft from vehicles, and catalytic converter theft in the last few months. I have spoken to the local police on several occasions and I am pleased that the situation has improved, but the thefts have not ceased. The Police have recently made arrests which I hope will see theft decrease further. However, if you are unfortunate enough to experience a crime, it is important to report it here: <https://www.met.police.uk/area/your-area/met/merton/wimbledon-park/contact-us/top-reported-crimes-in-this-area>

## CORONATION

If you are planning a street party for King Charles' Coronation on Saturday 6th May 2023, please find information from Merton Council below on what support is available. The deadline is 31<sup>st</sup> March: [https://www.merton.gov.uk/streets-parking-transport/streets-and-pavements/events/kings-coronation-street-parties?fbclid=IwAR0LDdtqAKMB0\\_klJiXxPWgy2MRIEj-D8S0Lc6hV9fBCbldQX2jYjsuKlzc](https://www.merton.gov.uk/streets-parking-transport/streets-and-pavements/events/kings-coronation-street-parties?fbclid=IwAR0LDdtqAKMB0_klJiXxPWgy2MRIEj-D8S0Lc6hV9fBCbldQX2jYjsuKlzc)

Finally, as we approach the 25<sup>th</sup> Anniversary of the Good Friday / Belfast Agreement, I believe the deal on the Northern Ireland Protocol, signed by our Prime Minister, will ensure the continuance of peace in Northern Ireland and significantly benefit the economic and strategic interests of our country.

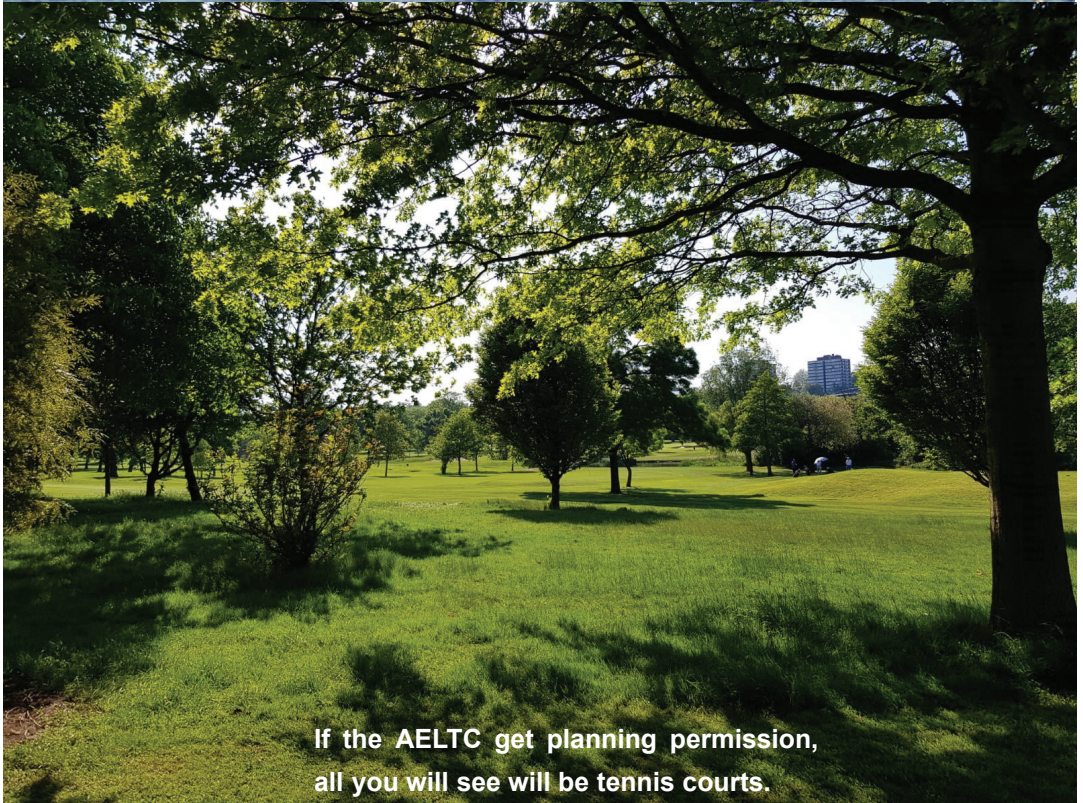
May I wish you a Happy Easter.

Yours,  
Stephen





How many trees will be lost forever?



If the AELTC get planning permission,  
all you will see will be tennis courts.



## DURNSFORD RECREATION GROUND

We had several donations for the Rec in late autumn. The All England Lawn Tennis Club donated a young oak sapling grown from an acorn from one of Capability Brown's original oak trees. It's only about 1 metre, so it will be a long time before we see it in all its glory! The Metropolitan Public Gardens Association in association with Taylors Bulbs of Spalding donated 400 spring and early summer bulbs, which, with the help of local children and their parents, were planted in the bed that runs along Wellington Road.



Abundance Wimbledon, who often pick surplus plums and apples in the Rec, donated 2 Apricot trees. Pictured are Jane Swan-White of Abundance with the help of Dave Walsh planting one of the trees.

If you have fruit trees in your garden but don't use all the fruit, please get in touch with Abundance at [abundancewimbledon@gmail.com](mailto:abundancewimbledon@gmail.com) and they will come and pick the fruit and pass it on to others to eat fresh or make jam, juice or puddings. They also distribute collected fresh fruit and vegetables to local charities, e.g. Wimbledon Guild, Dons Local Action Group and the Drop in Centre on Kingston Road.





# DANIEL SMITH

CARPENTER AND SPECIALIST JOINER

Beautiful, bespoke carpentry including:

- Alcove Bookcases • Cupboards
- Wardrobes • Bookshelves
- Sash Windows • Doors
- Home Offices • Radiator Covers

Tel: 020 8874 5205 Mobile: 07950 251026,

E-mail: [daniel-smith1@hotmail.co.uk](mailto:daniel-smith1@hotmail.co.uk)

48 Lavenham Road Southfields London SW18 5HE



## Wimbledon Park Hall

your community Hall

at 170 Arthur Road, Wimbledon Park

All booking information can be found at [www.wimbledonpark.com](http://www.wimbledonpark.com)

or

Email inquiries to: [wimbledonparkhall@gmail.com](mailto:wimbledonparkhall@gmail.com)

In keeping with tradition – a Flower Bed was planted in 2002 to celebrate the late Queen’s Golden Jubilee, the Fruit Hedge was planted in 2012 for her Diamond Jubilee, and the Wimbledon Park Residents’ Association donated a Mimosa tree to commemorate her Platinum Jubilee 2022. (See picture)



The fruit trees have started to blossom and, fingers crossed, we get a good crop of fruit this year.

Last year the very dry, hot summer meant that a lot of the trees shed their fruit early before it was ripe to eat.

The 3 Swamp Cypress trees that were planted last year with a grant obtained from the Council have unfortunately not fared well and I have asked the Council to replace them. The Mulberry tree that was moved when the school was expanded has also died and we await its removal. The oak sapling donated by the AELTC has been planted nearby to cover this area.

The Council is to replace the fence that runs alongside the Wellington Works. This is the original iron railings which, over the years, have been badly damaged in places by vehicles using the Wellington Works. It will be replaced by a 2-metre high mesh type fencing. Its replacement will unfortunately require the removal of the hedge that currently disguises the Works and the removal of 6 self-sown trees which have grown through the railings. I am assured that these trees will be replaced, albeit by saplings and not mature trees, and that the hedge will also be replaced but this will probably take a number of years to establish.



As spring arrives the bulb beds should soon be in all their glory.

Pamela Healy

# To Join the Wimbledon Park Residents' Association

Please complete this form and return it to us with your payment:

**Name** \_\_\_\_\_

**Address** \_\_\_\_\_

\_\_\_\_\_ **Post Code** \_\_\_\_\_

**Email\*\*\*** \_\_\_\_\_

### SUBSCRIPTION RATES

1 Year.....£5.00  
3 Years.....£12.00  
Donation.....£ \_\_\_\_\_

Payment Options:

**By cheque - please make cheques payable to:**

**Wimbledon Park Residents' Association**

Post to: WPRA, 56, Home Park Road, SW19 7HN

or

drop your subscription through the door of the Chairman, Iain Simpson, at 56 Home Park Road.

**Email\*\*\* If you would like to be included on an e-mail list for crime alerts, WPRA updates and information on other important local issues, please tick here**

**Please date...../...../.....**

## News from your local councillors

### News from your local councillors

There has been a great deal of concern locally regarding the **Wimbledon Park café** and the renewal of the lease. **Cllr Tony Reiss** intervened to discover the facts behind the rumours. He has confirmed that the current lessee, Mario, can re-bid for the lease (along with other interested potential bidders). The deadline for bids is the end of March.

**The sandpit in Wimbledon Park** is being repaired. We understand that work will take up to a month and the facility will be up and running in good time for the summer season.

**We are supporting Friends of Wimbledon Park application for a new water fountain** in the park. Enabling park-users to fill their own water bottles ensures a reduction in single use plastic and is more sustainable and better for the planet.

**Fly tipping** is a perennial problem in Wimbledon Park. We will continue to press for strong penalties against anyone found fly tipping. We are awaiting news of potential new CCTV sites to deter fly tipping.

**Waste collection and street cleaning** continues to be of concern too. With the Veolia contract coming to an end, we expect a further deterioration in the service but will be pressing our officers to keep Veolia to the terms of their contract before it ceases.

We have some additional good news to relate: we achieved a grant of £65k to be spent on rain gardens at **Kenilworth Green** (pocket park between Strathearn Road and Home Park Road). This is the first stage in a programme of refurbishment for this small green space. **Cllr Jil Hall** is helping to set up Friends of Kenilworth Green and this community-led group will bid for further funds to refurbish the green space. Litter picking will take place there on Sunday 7<sup>th</sup> May between 11am and 12, followed by a community event on Sunday 8<sup>th</sup> May from 4pm (bring a bottle and snacks and meet your neighbours).

Further grants were approved for repairs to the building at Workshop 305 in Weir Road. This is a community project which provides craft activities for young people with learning difficulties.

Funding was received to partially replace the fencing at Durnsford Rec. While it was disappointing not to receive the full grant applied for, nevertheless some fence replacement will be possible.



**Hercules Athletics** missed out on funding for much-needed improvements to the track (including lighting). **Cllrs Samantha MacArthur and Tony Reiss** are working with Hercules to press for the track to be repaired so that athletics can continue there.

**Cllr Tony Reiss** is continuing to press for action on air quality especially in the Plough Lane/Haydons Road/Durnsford Road area. A new air quality monitor is to be installed here soon.

Following action by **Cllrs Samantha MacArthur and Jil Hall, Clarion** and relevant officers have committed to support tenants to ensure that the management contract is being adhered to.

**Neighbourhood Watch:** It is disappointing to hear that out of all the wards in the Borough, Wimbledon Park has the fewest watch areas. Your local councillors have application forms and can help set up new schemes in the area. This will help the police to keep crime down and help us to build stronger neighbourhood connections.

**AELTC proposals for the golf course land.** The Club has submitted more supporting documents which have to be considered. It is also conducting a concerted PR campaign to garner more support for its proposals. We continue to support the local community's opposition to the proposal.

We are following several residents' queries regarding street trees.

NB: all three of your councillors are working on these issues – where names are mentioned, that councillor is the lead.

### **Our monthly surgeries**

While continuing to meet at Wimbledon Park (near the café) every first Saturday of the month from 10 – 11am, we will also hold surgeries in other parts of the ward as follows:

1<sup>st</sup> April      Workshop 305, Weir Road

6<sup>th</sup> May        Farmers' Market Wimbledon Park Primary School, Havana Road

4<sup>th</sup> June        Dropshot Café, Leopold Road

July onwards: locations to be confirmed (see next edition of the newsletter).

## FOWP Wimbledon Park Residents' Association Spring Update

As I write, there are lots of encouraging signs of spring in the Park: snowdrops in the bed below the Home Park Road entrance, daffodils in front of the railway embankment, the willows beside the Lake bursting into leaf and the birds pairing off in preparation for nesting.



Meanwhile, some repair work has been carried out on the newly opened sections of the brook, with the coir rolls restored and some new wooden mini-weirs put in to slow the flow in the steeper part of the brook. Let's hope this will prevent erosion during heavy rain. We know that some of you miss the waterfall area below the Lake and we are asking what the plans for its future are.

The water in the Lake looked

clearer today but there were recent reports that it looked polluted. While this may have been the beginning of the formation of some blue-green algae (largely harmless to the wildlife associated with the Lake but possibly hazardous to dogs if they enter the water), we asked for a proper investigation which Thames Water has a statutory duty to carry out. At the time of writing we await further news.



**While on the subject of water, we learned that drinking fountains were recently installed in Wimbledon Town Centre and Raynes Park and think there is a need for some in the Park. Merton Council's initial response was discouraging, saying that the water fountains that used to be by the sailing centre and the playground were vandalised and the cost of water safety testing is too high. The Council's free tap water scheme with shops and retailers could be extended to the café when the lease is renewed.**

**The situation with the avian flu reported previously appears to have stabilised and a recent bird count was the third highest January count over 35 years at 375. It's exciting to see that a small heronry is being established on the island in the Lake and that two little egrets are often down the south arm of the lake. Cormorants have also taken to roosting in the trees around the lake edge. We hope that the trees which all these species need to breed will be preserved in future.**



**November's tree planting was a great success, with the Friends of Wimbledon Park and Ahmadiyya female volunteers planting 300 trees and 300 acorns and yew cuttings in two days. Thanks also go to Fleur Anderson MP for planting a tree, and to the kind donors of a stone pine and a walnut which were planted near the volley ball courts.**

**Volunteers to help with future plantings and maintenance, which is already under way, are always welcome.**

**Contact:**

**[membership.fowp@gmail.com](mailto:membership.fowp@gmail.com)**

**Damaris Albarran**

## **WOULD YOU LIKE TO GET INVOLVED?**

**More committee members wanted!**

**Do you love living in Wimbledon Park?**

**Do you care about what is happening in your area?**

**Would you like to be more involved?**

The Wimbledon Park Residents' Association represents everyone living in the Ward. We meet 10 times a year to discuss issues affecting our everyday lives, such as planning applications, road safety, air pollution, and inputting to the wider issues such as the South London Waste Plan and the New Local Plan, and of course working with other RAs and The Wimbledon Society to defeat the AELTC planning application to develop Wimbledon Park golf course. We make representations to the Council on these and other issues on your behalf.

We are also friends of Durnsford Recreation Ground where we maintain the flower beds and fruit hedge and plant spring bulbs and shrubs. We obtained the grant to have exercise equipment installed together with 2 more benches and trees.

We plant and maintain the flower boxes on Arthur Road and are now assisting with the watering and maintenance of the Bee Friendly flower bed on Wimbledon Park Tube Station.

Issues we are pursuing at the moment include: safety on the Durnsford Road Railway Bridge, the new footbridge across the Wandle and the introduction of more trees on our streets.

The Ward Councillors attend our meetings where we ask them to raise issues directly with the Council on our behalf.

Currently we are a small committee and need much more help. Just a few hours a month would be enormously helpful. In particular we are looking for:

**a Minutes Secretary and a Membership Secretary.**

**Also someone to help with the advertising for the Newsletter.**

**If you would like to meet for a coffee and a chat, please get in touch with**

**either**

**Pamela Healy at [pam.2015@outlook.com](mailto:pam.2015@outlook.com)**

**or Iain Simpson at [wimbledonparkra@gmail.com](mailto:wimbledonparkra@gmail.com)**



# McGLENNONS Solicitors

*Providing legal services in Wimbledon Park since 1995. We specialise in:*

Wills & Lasting Powers of Attorney

Probate & Estate Administration

Residential Conveyancing

Leasehold Extensions & Freehold Enfranchisement

*No charge – 20 minute initial consultation*



**Conveyancing  
Quality**



**William Essex – Principal  
Maria Kapnoulla**

**157 Arthur Road London SW19 8AD  
Tel: 020 8946 6015 [www.mcglennons.co.uk](http://www.mcglennons.co.uk)**

## ABK

### A.B.K. ACCOUNTANCY & TAX SERVICES

**For All Your Accountancy, Taxation and Business needs**

- Accounts
- Taxation
- Self-employed
- VAT Returns
- Lettings Accounts
- Wages -PAYE
- Partnership Accounts
- Tax advice

- Book Keeping Services
- Management Accounts
- Self- Assessment Tax Returns
- Limited Company Accounts
- Company Formation
- Sub-contractors C.I.S.
- Tax Refunds

**All services at competitive rates**

**59 Ashen Grove, Wimbledon Park, London SW19 8BL**

**Tel: 020 8947 9931 – Fax: 020 8879 3412 – Mob: 07989770847**

**Email: [abk.accountancy@btinternet.com](mailto:abk.accountancy@btinternet.com) Website – [www.abk-accountancy.com](http://www.abk-accountancy.com)**



**Views that will be lost forever**





N  
gh

# NEWS

**LAXTON'S  
TRANSPORT**

Large/Small  
Experienced  
Competitive

**LAXTONS**  
Established  
1958

Ph. 081-946 1016

FULLY DELIVERED EVERY WEEK TO  
Wimbledon — Wimbledon Village — Merton — Morden

## CLUB PLAYS A £5m. ACE!

**THE controversial sale of Wimbledon Park golf course was completed this week with a winning £5.2 million bid from the neighbouring All England Tennis Club.**

And in separate statements the club and Merton Council gave assurances that the 71-acre site would remain open space with no major building developments.

"We completely understand and support everyone's determination to keep the land open and we purchased the land on that basis," said All England chairman John Currie.

Said council leader Tony Colman: "Respecting the wishes of local people, this council is resolute that the land will be retained as open space.

"All England has bought the land knowing this is our

### DAVID BUCHAN

policy and is aware that we would not allow development of the site."

But conservationists fear that planning restrictions on the future of the golf course are not tough enough. The club has talked of using it for additional practice courts and car parking.

Mr Currie explained that earlier this year the club had announced its long-term plans to take



*How the new Wimbledon will look, with the golf course in the foreground.*

Wimbledon into the 21st century with a new Number One court and other expanded facilities.

The purchase of the Wimbledon Park golf course land will not affect long-term plan, which stands on its own feet without the use of adjoining land," he added.

"The golf club has a long lease with the council with some 48 years to run so their position is fully protected for many years to come."

Coun Colman pointed out that the All Eng-

land Club had purchased only the freehold and Wimbledon Park Golf Club continued to hold the lease for the course.

"It will continue to be an integral part of the Merton sporting scene," he said.

No decision had yet been taken on how the £5.2 million windfall would be spent.

"Suffice to say that it is desperately needed. Merton in common with all London local authorities is desperately short of cash for capital projects," said Coun

Colman.

"This sale will enable us to take full advantage of the Government's scheme to retain all capital receipts from property sales finalised before December 31.

"We desperately need funds to undertake urgent capital work on our schools, on facilities for young people, on our residential homes for elderly people and environmental projects such as the new park we are creating within the borough."

## Boost for

DURNSFORD

**CONSERVATIVE**

**In Touch**

### STOP PRESS LABOUR PLANS SELL OFF IN PARK

Local Tory Councillors Theresa May and Barry Edwards are furious at plans by the Labour Council to sell off the Golf Course in Wimbledon Park. The plans were revealed at the last minute to a meeting of the Council's Leisure Services Committee on 31 March.

"I'm appalled at Labour's plans and will do all I can to oppose them," said Theresa May, adding "I only heard about this about half an hour before the meeting. I asked last year if they had any plans to sell off the Golf Course and they said categorically no. Now we see that they've obviously been plotting behind closed doors. So much for Labour promises."

"Labour even refused to delay the decision so that local people could be consulted," continued Theresa, saying "Once again the Council is riding roughshod over residents views. People don't want the Golf Course to be sold off for goodness knows what use. If it's the Golf Course today what will it be selling tomorrow?"

Clr Barry Edwards was equally adamant in his opposition to the proposal. "Local residents currently enjoy certain privileges at the Golf Club in the Park like reduced green fees for senior citizens," explained Barry, adding "How long would that last once the Club was sold, and there's no cast iron guarantee that the land would still be used as a golf course. What's more the Council would be losing an annual income of £100,000 which is currently spent on the Borough's leisure facilities."

Published by Durnsford Conservatives 2 Trinity Road London SW19  
Printed by Printfast Ltd 24 Rathbone Place London W1.

## WPRA Communications

If you want to be kept up to date with the key issues and other useful information on what your WPRA committee members are involved with, why don't you subscribe to our information updates on email? It's free and we do not overburden you with emails (we all probably have too many already), and only send out what we think is really useful information.

Just send an email to [wimbledonparkra@gmail.com](mailto:wimbledonparkra@gmail.com) and request to be added to the general email list.

+++++

The Umbrella group of Residents' Associations, which also includes the Wimbledon Society, continues its campaign to urge the AELTC to rethink their plans for Wimbledon Park Golf Course. A new campaign has been launched.

See the new website at [www.SaveWimbledonPark.org](http://www.SaveWimbledonPark.org) and please help us by signing the petition at [www.Change.Org/SaveWimbledonpark](http://www.Change.Org/SaveWimbledonpark)

There is now an informative dedicated page on the Wimbledon Society website providing information about the AELTC planning application and concerns.

<https://wimbledonsociety.org.uk/category/aeltc/>

| ESTABLISHED LOCALLY OVER 30 YEARS |

# K.D. RAYNSFORD

| LANDSCAPE GARDENING AND BUILDING |



Paving and patios, brickwork and garden walls / All types of fencing, trellis and decking

New lawns and artificial grass / Tree pruning and garden tidy ups

Patio cleaning and waste removal / Painting and decorating interior/exterior

Kitchens and bathrooms fitted / Guttering and roofing repairs

Complete renovations to small repairs / All types of building work undertaken

**Call 0800 2 118 618 / Mobile 07946 338 456**

**Free estimates and friendly advice**



## **The Wimbledon Park Community Trust**

**The Wimbledon Park Community Trust was incorporated in October 2013 and subsequently registered as a charity.**

**The objects of the charity are:**

**‘The promotion of the benefits of the inhabitants of Wimbledon Park and the neighbourhood thereof (hereinafter called the area of benefit) without distinction, by the advancement of education and the provision of facilities in the interests of social welfare for recreation and leisure time occupation, with the object of improving the conditions of life for the said inhabitants.’**

**The Trust has a lease (99 years from 2013) from The London Borough of Merton, on the space known as Wimbledon Park Hall including the adjoining Arthur’s Café at 170 Arthur Road.**

**The main income of the Trust is derived from renting the hall and café.**

**We would like to encourage local residents to contact us if they feel they can identify a person, organisation or project that would benefit from our support. It can either be a project that would benefit the local area or an organisation that is involved in work that would be of benefit to residents in the local area. We are particularly interested in supporting an apprentice who lives in the local area.**

**General Guidelines:**

- The maximum grant size that can be applied for is £5,000.**
- The minimum grant size that can be applied for is £500, except in exceptional circumstances.**
- The Trustees will have total discretion on awarding grants.**
- All applications must give proper detail of the intended use of the grant money and what the ultimate benefit/outcome will, or is expected to, be.**
- No grants will be given for general revenue purposes; only for specific or capital spending projects.**

**Applications can be made at any time.**

**Please send them in writing to:**

**Wimbledon Park Community Trust,**

**56 Home Park Road, SW19 7HN.**

**All applications will be acknowledged.**

**The latest available accounts for the charity can be found at**

**[www.wimbledonpark.com](http://www.wimbledonpark.com)**

**Company No. 08727642**

**Registered Charity No. 1156930**

## **Oakley Locksmiths Ltd**

We are a family run business based in Southfields since 1987. Our company offers free no obligation quotations on all types of security for both the residential and commercial markets. Our fully trained locksmiths supply and fit all makes of locks and key cutting in our shop starts from £2.50.

81 Replingham Road

Southfields, SW18 5LU

020-8871-1238

[www.oakleylocksmiths.co.uk](http://www.oakleylocksmiths.co.uk)

## **W.P.R.A. Committee 2022/2023**

Farrukh Ahmed	Ryfold Road
Christopher Coombe - Planning/Newsletter	Home Park Road
Clive Daws	Home Park Road
Pamela Healy - Advertising/Planning/Newsletter	Brooklands Avenue
Paresh Modasia	Home Park Road
Iain Simpson - Chairman & Newsletter Editor	Home Park Road
Peter West - Planning	Cromwell Road
Cllr Jil Hall, ex officio	Kings Road
Cllr Samantha MacArthur, ex officio	Kings Road
Cllr Tony Reiss, ex officio	Dora Road

**Adam's Plumbing**  
Southfields, SW18

*With 25 years' experience, working in the Southfields area, I undertake all household plumbing and heating jobs.*

*For a prompt call out, or to arrange a free estimate, please contact me on:*

07956 324460  
adams\_plumbing@hotmail.co.uk

**Advertising in this magazine.**

**Contact Pamela Healy**

**pam.2015@outlook.com**

**VOLUNTEERS NEEDED TO DELIVER NEWSLETTERS IN**

**Durnsford Road and Dora Road**

**If you can spare an hour or so three times a year, we would be very grateful. We will deliver the newsletters to your door for distribution.**

**If you would like to help, please contact Pamela Healy at  
pam.2015@outlook.com**

## **Index of Advertisers**

<b>Accounting</b>	<b>ABK Accountancy and Tax Services</b>	<b>21</b>
<b>Carpenter</b>	<b>Daniel Smith</b>	<b>13</b>
<b>Locksmiths</b>	<b>Oakley Locksmiths Ltd</b>	<b>27</b>
<b>Landscape Gardening and Building</b>	<b>K D Raynsford</b>	<b>25</b>
<b>Schools</b>	<b>Little Learners</b>	<b>32</b>
<b>Plumbing</b>	<b>Adam's Plumbing</b>	<b>29</b>
<b>Schools</b>	<b>Little Learners</b>	<b>32</b>
<b>Solicitors</b>	<b>McGlennons</b>	<b>21</b>
<b>Stain Glass &amp; Leaded lights</b>	<b>Coriander</b>	<b>9</b>
<b>Windows</b>	<b>SPS Timber Windows</b>	<b>2</b>





**Little  
Learners**



# Nurseries in Wimbledon and Southfields

- Offering childcare Monday – Friday
- Flexible hours between 9am – 3.00pm
- Wrap around care from local schools
- Grant funding available

**Little Learners In the Gardens**  
Coronation Gardens  
95 Pirbright Road  
Southfields  
London Sw18 5NB

07749 377 253 or 0208 870 4748  
littlelearnersinthegardens@hotmail.com

**Little Learners In the Park**  
Durnsford Recreation Ground  
Wellington Road  
London  
SW19 8EY

07749 899 976 or 0208 944 0101  
littlelearnersinthepark@gmail.com

[www.littlelearnersnurseries.com](http://www.littlelearnersnurseries.com)



*elys*  
**SHOP  
ONLINE**

AT

**elyswimbleton.co.uk**

16 St George's Road, Wimbledon, London, SW19 4DP

 elyswimbleton  elyswimbleton

**10% Off Your First Order**

Use Code: ELYS10PC



Free Delivery  
Over £50



Next Day  
Delivery\*



Same Day  
Click & Collect\*



Free Returns



Book Services

\* See online for Terms & Conditions